

Soda Scones

A pale golden lightly floured soda scone with a soft pliable texture, baked on the hotplate.

Pack Size:

4 Pack, 2 Pack

Ingredients:

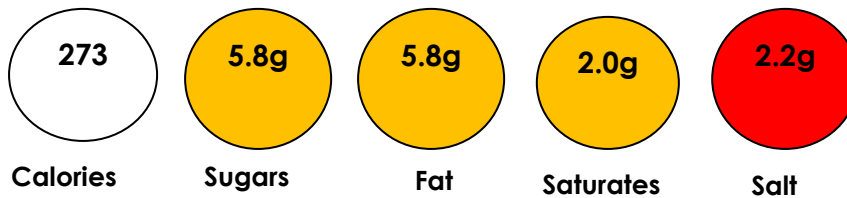
Wheat Flour, Water, Vegetable Oil, Sugar, Vegetarian Whey Powder, Raising Agents (E450a, E500, E541), Soya Flour, Salt.

Allergen Information:

May contain traces of nuts and sesame seeds

Contains: Wheat, Gluten, Soya

Nutritional Information per 100g



Additional Information:

Store in a cool dry place.



Suitable for Vegetarians